

Manifolds, hoses, couplers, tubing

Shown: Hoses, Couplers, Manifolds



Use genuine Enerpac manifolds, couplers, hoses and tubings to connect your workholding cylinders or fixtures to the hydraulic power source.

A-series, Manifolds

For multiple hydraulic line connections at one central location directing oil to or from a pressure source.

H700-series, Hoses

High pressure hydraulic hoses, for demanding applications. Thermo-plastic safety hoses for use on all Enerpac pumps and cylinders.

C-series, High Flow Couplers

High pressure couplers recommended for use with all Enerpac pumps and cylinders.

AH, AR-series, Couplers

Spee-D® quick disconnect low leakage couplers for easy connection of hydraulic circuits.

T-series, Tubing

High pressure steel tubing, available in 1,5 m lengths.

Manifolds

- Easy to connect
- Mounting holes on all models

Couplers

- For more safety: couplers cannot be connected or disconnected while under hydraulic pressure

Hydraulic hoses and tubings

- Thermo-plastic safety hoses (max. 700 bar)
- Four layer design, including two high strength wire braids
- High pressure steel tubing for permanent installations.

Important

Do not exceed the maximum pressure.

Inspect hoses and tubing frequently and replace as required.

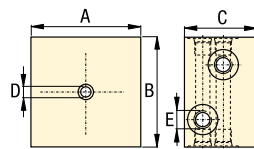
Options

Fittings

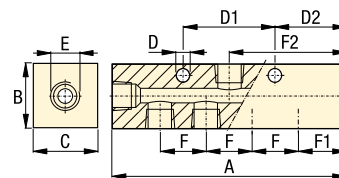
194 ▶



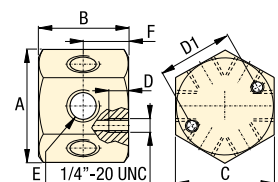
A-63



A-60, -61, -64, -65



A-66



Manifolds dimensions in mm [± 0.1]

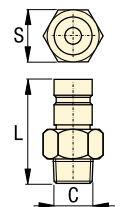
Number of ports	Model number	A	B	C	D	D1	D2	E	F	F1	F2	kg
2 x 4	A-63	76	76	51	6,3	-	-	SAE #4	-	-	-	0,9
5	A-60	89	32	32	7,1	38	25	SAE #4	38	25	44	0,5
7	A-61	165	32	32	7,1	38	32	SAE #4	25	32	83	0,6
7	A-64	178	32	32	6,3	76	32	3/8"-18 NPTF	38	32	89	1,5
7	A-65	368	32	32	6,3	203	32	3/8"-18 NPTF	102	32	184	2,7
6	A-66	58	42	51	13,2	38	-	3/8"-18 NPTF	-	-	-	0,9

Thermoplastic Safety Hoses

Hose length m	Hose End one NPTF	Hose End two NPTF	Internal diameter mm	Model Number	Maximum Pressure bar	kg
0,6	3/8"	3/8"	6,4	H-7202	700	0,5
0,9	3/8"	3/8"	6,4	H-7203	700	0,7
1,8	3/8"	3/8"	6,4	H-7206	700	0,9
3,0	3/8"	3/8"	6,4	H-7210	700	1,4

Couplers

Max. pressure bar	Max. oil flow l/min	Model Nr. coupler complete	Model Nr. female half	Model Nr. male half	Thread size C	L mm	S mm
700	40	C-604	CR-400	CH-604	3/8" NPTF	64	22
700	40	A-604	AR-400	AH-604	3/8" NPTF	42	19
350	17	-	AR-650 *	AH-650	1/4" NPTF	38	17,5
350	17	-	AR-650 *	AH-652	G 1/4"	34	17,5
350	17	-	AR-650 *	AH-654	SAE #4	41	17,5



* Note: Thread size **AR-650** is 1/4" NPTF, dimension S is 20,6 mm. Use **FZ-1055** fitting to connect to 3/8" hose ends.

Tubing

Maximum Pressure bar	Length m	Model number	Internal diameter mm	External diameter inch
350	1,5	T-2560	ø 3,8	ø 1/4"

Shown: MB-4, MB-1



MB-series

Single or multiple station manifolds allow installation of VSS and VST-series positive seal control valves or other D03/CETOP 3 valves. Ideal in applications where independent control of multiple cylinders is required.

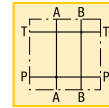
When independent control of multiple cylinders is required

- Multi-station manifolds with SAE or CETOP 3 porting – minimizes plumbing
- Mounting patterns for:
VSS and VST Valves (D03 or CETOP 3);
VE Valves (D03 or CETOP 3);
VP03 Valves (D03 or CETOP 3);
VMMD Valves (D03 or CETOP 3)
- Manifolds allow use of accessories, such as pressure switches and gauges.

Mounting: 1 - 4 valves

Pressure: 350 bar

- E** Colectores
- F** Manifolds
- D** Verkettungsblöcke



Options

VSS, VST-series valves

☐ 140 ▶



Pressure switches

☐ 188 ▶



Gauges and accessories

☐ 190 ▶



Fittings

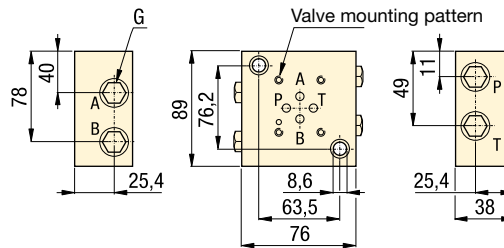
☐ 194 ▶



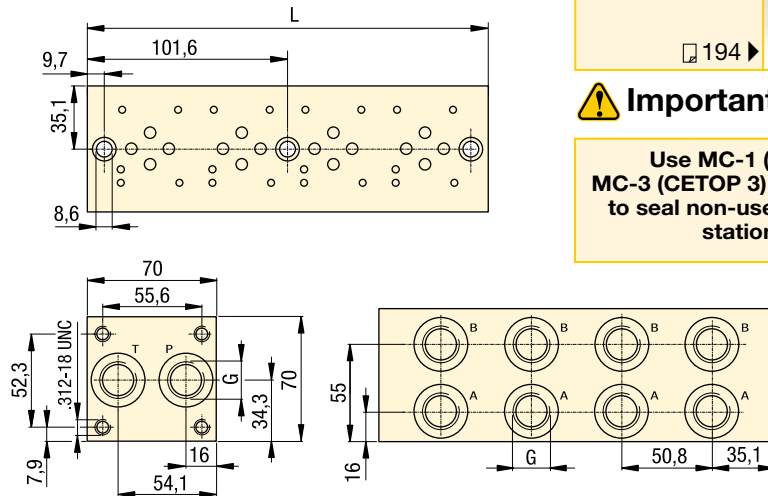
Important

Use MC-1 (D03) or MC-3 (CETOP 3) cover plates to seal non-used manifold stations.

MB-1, MB-12



MB-2, -22, MB-4, -42



Each non-used valve station on manifolds must be sealed with MC-1 cover plate.



Product selection

Valve mounting pattern	Number of valve stations	Model number	Oil ports cover plate	Coverplate model number *	Manifold	
			G		L	kg
					mm	
▼ Single station manifold						
CETOP 3	1	MB-12	G1/4"	-	-	0,5
D03	1	MB-1	SAE #4	-	-	0,5
▼ Multipler station manifolds						
CETOP 3	2	MB-22	G3/8"	MC-3	121	1,5
D03	2	MB-2	SAE #8	MC-1	121	1,5
CETOP 3	4	MB-42	G3/8"	MC-3	222	2,8
D03	4	MB-4	SAE #8	MC-1	222	2,8

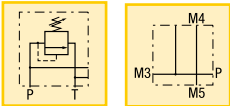
* Note: - MC-1 manifold cover plate must be ordered separately. Includes gasket and mounting bolts.

Mounting: 1-8 VP valve stations

Pressure: 350 bar

Flow: 15 l/min

- E** Pernos de montaje de válv.
- F** Vis de montage de distrib.
- D** Zugstangen



Simplifies valve and accessory mounting

TRK-series tie rods

- Connects 1 to 8 VP-series valves station high
- Provide leak-free sealing valves
- G1/4" oil connection

WM-10 remote manifold

- Allows remote VP-series valve mounting
- Adjustable relief valve incorporated
- G1/4" oil connection

PB-1 porting manifold

- Provide 3 auxiliary pressure lines
- G1/4" oil connection

Shown: WM-10, TRK-4, PB-1



▶ TRK-series

Tie Rod Kits mount Enerpac VP-series modular valves to the WM-10 manifold and can accommodate one to eight VP-valve stations.

▶ WM-10

Remote manifold allows mounting of VP-series modular valves to a remote location from the pumping unit. This manifold has a built-in adjustable relief valve.

▶ PB-1

Porting manifold provides three pressure ports for auxiliary lines or accessories, such as a pressure gauge. Mounts between VP-series modular valve stations using TRK-series tie rod kits.

Options

Pressure switches

188 ▶



VP-series directional valves

130 ▶

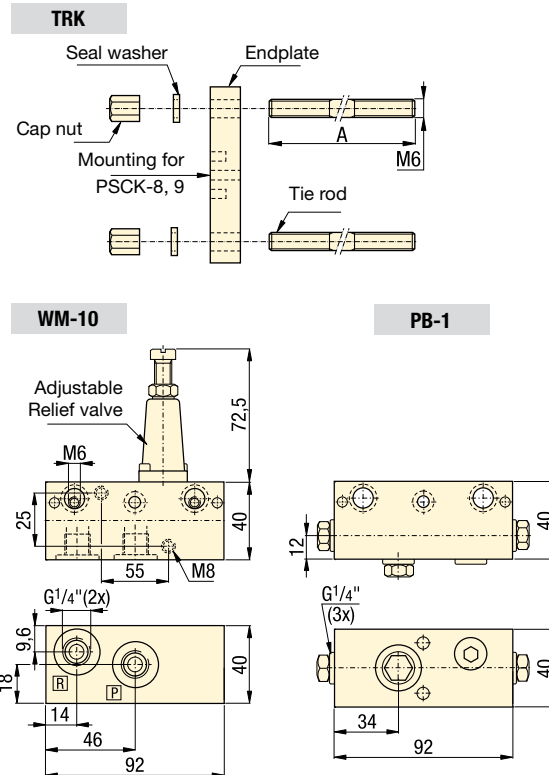
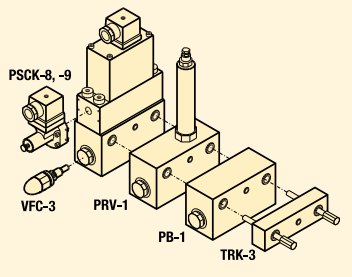


Gauges

189 ▶



VP-series



Product selection

Quantity of stackable VP-series directional valves	Model number	Tie rod length A mm	Mounting thread mm
▼ Tie rod kits			
1	TRK-1	85	M6
2	TRK-2	125	M6
3	TRK-3	165	M6
4	TRK-4	205	M6
5	TRK-5	245	M6
6	TRK-6	285	M6
7	TRK-7	325	M6
8	TRK-8	365	M6

Product selection

Oil ports	Model number	Hydraulic schematic	Maximum pressure bar
BSPP			
▼ Remote manifold with pressure relief			
2x G1/4"	WM-10		350
▼ Porting manifold (P port connection)			
3x G1/4"	PB-1		350

■ Tie rods mount VP-series valves and accessories to manifold, providing leak-free sealing.

