

LOW-HEIGHT TELESCOPIC CYLINDERS

Extended stroke for low-clearance applications



ENERPAC 

▼ RLT-Series, Low-Height Telescopic Cylinder



- Single-acting, load-return
- Nitrocarburization surface treatment for improved load and wear resistance and corrosion protection
- For use in confined spaces: machinery positioning, tool fastening
- Mounting bolt holes for easy fixturing
- Up to 3% side-load of maximum capacity
- Design safety factor complies with ASME B30.1 & EN1494
- CR-400 coupler for compatibility with standard product
- High-alloy steel for maximum strength

Extended Stroke for Low-Clearance Applications



Internal Mechanics

RLT-Series, Low-Height Telescopic Cylinders

Enerpac compact, low-height telescopic cylinders are available with two or three pistons, and can lift loads up to 1.57 inches in a single movement.

Nitrocarburization surface treatment for improved wear resistance and corrosion protection for increased safety and longer service life in harsh conditions. The longer stroke length of telescopic cylinders will save you time and simplify projects by moving a load a greater distance and eliminating the use of temporary cribbing.



Multi-Stage Cylinders

1st Stage: maximum load capacity at lower stroke.

2nd Stage: extended stroke with lower capacity than the 1st stage.

Final Stage: maximum stroke extension with lowest capacity.



Cylinder Capacity at Maximum Stroke (ton)	Maximum Stroke (in)	Model Number	Collapsed Height A (in)	Extended Height B (in)	Oil Capacity (in³)
4.8	0.67	RLT-40	1.77	2.44	1.29
4.8	0.91	RLT-41	2.13	3.03	3.09
12.5	0.71	RLT-110	2.15	2.85	2.90
12.5	1.57	RLT-111	3.50	5.08	14.71
26.1	1.06	RLT-230	2.95	4.02	9.15
26.1	1.26	RLT-231	3.78	5.04	18.50
34.8	1.14	RLT-311	3.50	4.65	13.64
55.8	1.02	RLT-501	3.78	4.80	17.29
81.7	1.02	RLT-741	4.49	5.51	25.97

Low-Height Telescopic Cylinders, Single-Acting



Assisted-Return Pumps with Venturi Valve Technology

To improve productivity and

plunger retraction, Enerpac offers valve configurations designed to accelerate your cylinder retraction speeds. ZU4 and ZE-Series pumps feature **Venturi Valve Technology** to facilitate the faster return of single-acting gravity and spring-return cylinders. See enerpac.com for details.



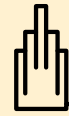
4-Way Manifold Assembly Complete with Gauges

Offering ease of portability and

convenience with an ergonomic robust design, ready for use. Enerpac's CR400 female couplers on all ports allow the manifold to be quickly connected to up to 4 cylinders. Glycerin-filled, 10,000 psi gauges allow operators to work safely. All protected by the robust protection frame.

Manifold Type (Used for cylinders)	Model Number
4x Single-acting	AMGC41
4x Double-acting	AMGC42

RLT Series



Capacity:

4.8 - 81.7 tons

Stroke:

0.67 - 1.57 inches

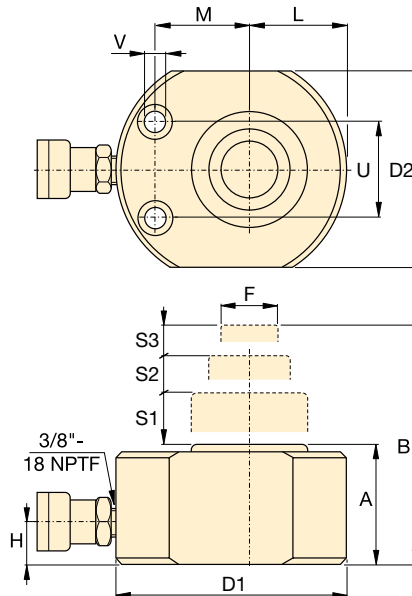
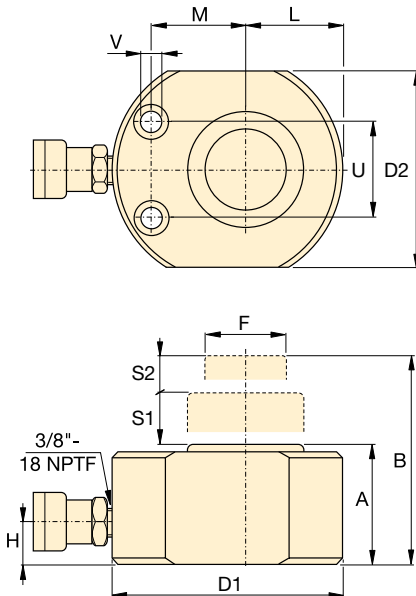
Maximum Operating Pressure:

10,150 psi



Hoses

Enerpac offers a complete line of high-quality hydraulic hoses. To ensure the integrity of your system, specify only Enerpac hydraulic hoses.



RLT-Cylinders

Mounting Hole Dimensions (in)

Model Number	Bolt Distance U	Hole Diameter V	Counter Bore Diameter	Counter Bore Depth
RLT-40	1.46	0.26	0.43	0.28
RLT-41	1.97	0.35	0.55	0.35
RLT-110	1.97	0.35	0.55	0.35
RLT-111	2.99	0.51	0.79	0.51
RLT-230	2.64	0.51	0.79	0.51
RLT-231	2.99	0.26	0.43	0.28
RLT-311	2.99	0.51	0.79	0.51
RLT-501	2.99	0.26	0.43	0.28
RLT-741	4.61	0.35	0.55	0.35

1st Stage		2nd Stage		3rd Stage		Outside Diameter	Plunger Diameter	Bottom to Advance Port	Plunger to Base	Plunger to Mounting Hole	Weight	Model Number
Capacity (ton)	Stroke S1 (in)	Capacity (ton)	Stroke S2 (in)	Capacity (ton)	Stroke S3 (in)	D1 x D2 (in)	F (in)	H (in)	L (in)	M (in)	(lbs)	
12.5	0.43	4.8	0.24	—	—	3.27 x 2.20	0.98	0.79	1.14	1.30	4.0	RLT-40
26.1	0.43	12.5	0.28	4.8	0.20	4.02 x 3.15	0.98	0.79	1.61	1.54	6.8	RLT-41
26.1	0.43	12.5	0.28	—	—	4.02 x 3.15	1.50	0.79	1.61	1.54	6.6	RLT-110
81.7	0.63	34.8	0.51	12.5	0.43	6.50 x 5.51	1.50	0.98	2.78	2.60	28.9	RLT-111
55.8	0.63	26.1	0.43	—	—	5.51 x 4.49	2.24	0.79	2.28	2.20	16.8	RLT-230
104.4	0.63	55.8	0.39	26.1	0.24	7.01 x 6.38	2.24	1.14	3.50	2.76	38.1	RLT-231
81.7	0.63	34.8	0.51	—	—	6.50 x 5.51	2.36	0.98	2.78	2.60	28.7	RLT-311
104.4	0.63	55.8	0.39	—	—	7.01 x 6.38	3.07	1.14	3.50	2.76	38.1	RLT-501
158.2	0.63	81.7	0.39	—	—	8.50 x 7.72	3.74	1.38	4.25	3.07	67.0	RLT-741



HYDRAULIC PUMPS

Enerpac hydraulic pumps are available in over 1000 different configurations. Whatever your application needs are for speed, control, intermittent or heavy-duty, Enerpac has the right solution for you. Featuring Hand, Battery, Electric, Air and Gasoline-powered models, Enerpac offers the most comprehensive pump line available.



P-Series, Hand Pumps



XC-Series, Cordless Pumps



XA-Series, Air-Driven Pumps



ZU4-Series, Portable Electric Pumps



ZE-Series, Electric Pumps



SFP-Series, Split-Flow Pumps

www.enerpac.com

Enerpac Worldwide Locations

For a complete list of addresses see:
www.enerpac.com/en/enerpac-locations
 User Inquiries: 800-433-2766
 Distributor Inquiries: 800-558-0530

Your Enerpac Distributor:

736_03-030143318_EN-US © 2018 Enerpac - Subject to change without notice.

ENERPAC 
 POWERFUL SOLUTIONS. GLOBAL FORCE.