

High Pressure Fittings *Selection & dimensions*

Shown: FZ-2052, FZ-2054, FZ-2023



Fitting are used to connect all cylinders, components, power sources, tubes, gauges and hoses in a hydraulic system. Enerpac fittings provide flexible, safe and leak-free connections.

Multiple hydraulic line connections are easily installed with Enerpac fittings and manifolds.

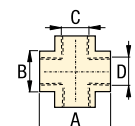
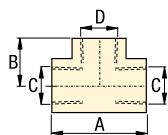
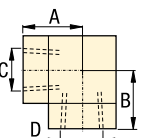
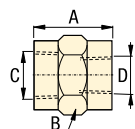
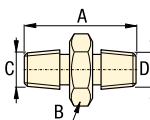
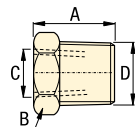
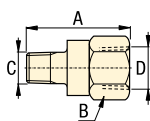


Proper connection for hydraulic components

- Male and female BSPP, NPTF and SAE threaded fittings in common sizes allow easy connection of all components.
- BFZ and FZ-1000 models are 700 bar maximum pressure
- FZ-2000 models are 350 bar maximum pressure.

Product selection

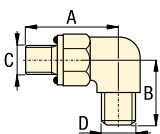
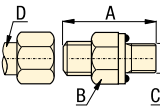
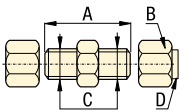
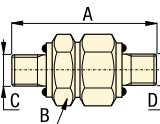
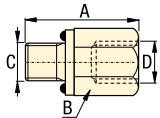
From	To	Maximum pressure bar	Model number	Dimensions			
				A mm	B mm	C	D
▼ Adapters							
G 1/4"	1/8" NPTF	700	BFZ-16411	35	19	1/4"-18 NPTF	G 1/4"
G 1/4"	1/8" NPTF	700	BFZ-16421	31	19	1/8"-27 NPTF	G 1/4"
G 3/8"	1/4" NPTF	700	BFZ-16323	43	24	1/4"-27 NPTF	G 3/8"
G 3/8"	3/8" NPTF	700	BFZ-16324	43	24	3/8"-27 NPTF	G 3/8"
1/4" NPTF	1/8" NPTF	700	FZ-1642	31	19	1/8"-27 NPTF	1/4"-18 NPTF
3/8" NPTF	1/4" NPTF	700	FZ-1055	37	24	1/4"-18 NPTF	3/8"-18 NPTF
1/2" NPTF	1/4" NPTF	700	FZ-1633	43	29	1/4"-18 NPTF	1/2"-14 NPTF
1/2" NPTF	3/8" NPTF	700	FZ-1634	43	29	3/8"-18 NPTF	1/2"-14 NPTF
SAE #4	1/4" NPTF	350	FZ-2007	29	19	7/16"-20 UN	1/4"-18 NPTF
SAE #4	1/8" NPTF	350	FZ-2008	25	14	7/16"-20 UN	1/8"-27 NPTF
SAE #4	SAE #2	350	FZ-2022	29	17	5/16"-24 UN	7/16"-20 UN
▼ Reducers							
1/4" NPTF	3/8" NPTF	700	FZ-1630	22	22	1/4"-18 NPTF	3/8"-18 NPTF
1/4" NPTF	1/2" NPTF	700	FZ-1661	28	22	1/4"-18 NPTF	1/2"-14 NPTF
SAE #6	SAE #8	350	FZ-2029	35	27	3/4"-16 UN	9/16"-18 UN
3/8" NPTF	G 1/4"	700	BFZ-16301	19	19	G 1/4"	3/8"-18 NPTF
▼ Male Nipples							
1/4" NPTF	1/4" NPTF	700	FZ-1608	37	16	1/4"-18 NPTF	1/4"-18 NPTF
3/8" NPTF	3/8" NPTF	700	FZ-1617	37	19	3/8"-18 NPTF	3/8"-18 NPTF
3/8" NPTF	3/8" NPTF	700	FZ-1619	51	19	3/8"-18 NPTF	3/8"-18 NPTF
3/8" NPTF	G 1/4"	700	BFZ-305	36	19	3/8"-18 NPTF	G 1/4"
▼ Female Connectors							
1/4" NPTF	1/4" NPTF	700	FZ-1605	29	19	1/4"-18 NPTF	1/4"-18 NPTF
3/8" NPTF	1/4" NPTF	700	FZ-1615	29	22	3/8"-18 NPTF	1/4"-18 NPTF
3/8" NPTF	3/8" NPTF	700	FZ-1614	29	22	3/8"-18 NPTF	3/8"-18 NPTF
1/2" NPTF	3/8" NPTF	700	FZ-1625	38	29	1/2"-14 NPTF	3/8"-18 NPTF
▼ Elbows							
1/4" NPTF	1/4" NPTF	700	FZ-1638	23	19	1/4"-18 NPTF	1/4"-18 NPTF
3/8" NPTF	3/8" NPTF	700	FZ-1610	26	22	3/8"-18 NPTF	3/8"-18 NPTF
▼ Tee							
1/4" NPTF	1/4" NPTF	700	FZ-1637	45	19	1/4"-18 NPTF	1/4"-18 NPTF
3/8" NPTF	3/8" NPTF	700	FZ-1612	52	22	3/8"-18 NPTF	3/8"-18 NPTF
▼ Cross							
3/8" NPTF	3/8" NPTF	700	FZ-1613	52	7/8"	3/8"-18 NPTF	3/8"-18 NPTF



 **Product selection**

From	To	Maximum pressure bar	Model number	Dimensions			
				A mm	B mm	C	D
▼ Adapters							
1/8" NPTF	SAE #4	350	FZ-2075	27	17	1/8"-27 NPTF	1/4"-18 NPTF
1/4" NPTF	SAE #4	350	FZ-2042	33	17	1/4"-18 NPTF	7/16"-20 UN
1/4" NPTF	G 1/4"	700	BFZ-16411	35	19	1/4"-18 NPTF	G 1/4"
SAE #4	1/8" NPTF	350	FZ-2008	25	14	7/16"-20 UN	1/8"-27 NPTF
SAE #4	1/4" NPTF	350	FZ-2007	29	19	7/16"-20 UN	1/4"-18 NPTF
SAE #2	SAE #4	350	FZ-2022	26	14	5/16"-24 UN	7/16"-20 UN
SAE #6	1/4" NPTF	350	FZ-2056	29	19	9/16"-18 UN	1/4"-18 NPTF
SAE #8	1/4" NPTF	350	FZ-2067	29	22	3/4"-16 UN	1/4"-18 NPTF
SAE #8	3/8" NPTF	350	FZ-2069	33	22	3/4"-16 UN	3/8"-18 NPTF
G 1/8"	1/8" NPTF	350	FZ-2055	25	16	G 1/8"	1/8"-27 NPTF
G 1/8"	1/4" NPTF	350	FZ-2060	33	19	G 1/8"	1/4"-18 NPTF
G 1/8"	SAE #4	350	FZ-2066	25	17	G 1/8"	7/16"-20 UN
G 1/4"	1/4" NPTF	350	FZ-2023	33	19	G 1/4"	1/4"-18 NPTF
G 1/4"	SAE #4	350	FZ-2065	28	19	G 1/4"	7/16"-20 UN
▼ Straight union							
SAE #4	SAE #4	350	FZ-2005	32	14	7/16"-20 UN	7/16"-20 UN
SAE #6	SAE #6	350	FZ-2028	36	17	9/16"-18 UN	9/16"-18 UN
SAE #8	SAE #8	350	FZ-2040	40	22	3/4"-16 UN	3/4"-16 UN
▼ Straight union to tube ends							
ø 1/4"	ø 1/4"	350	FZ-2033 *	35	13	7/16"-20 UN	ø 1/4"
ø 1/4"	ø 1/4"	350	FZ-2013 **	52	13	7/16"-20 UN	ø 1/4"
▼ Adaptors to tube end							
1/8" NPTF	ø 1/4"	350	R-1054 *	31	13	1/8"-27 NPTF	ø 1/4"
1/4" NPTF	ø 1/4"	350	FZ-2020 *	36	14	1/4"-18 NPTF	ø 1/4"
1/4" NPTF	ø 3/8"	350	FZ-2072 *	36	16	1/4"-18 NPTF	ø 3/8"
1/4" NPTF	ø 1/4"	350	FZ-2012 **	34	14	1/4"-18 NPTF	ø 1/4"
3/8" NPTF	ø 1/4"	350	FZ-2061 *	37	19	3/8"-18 NPTF	ø 1/4"
3/8" NPTF	ø 3/8"	350	FZ-2068 *	37	19	3/8"-18 NPTF	ø 3/8"
SAE #2	ø 1/4"	350	FZ-2025 *	26	14	5/16"-24 UN	ø 1/4"
SAE #4	ø 1/4"	350	FZ-2019 *	32	14	7/16"-20 UN	ø 1/4"
SAE #4	ø 1/4"	350	FZ-2001 **	29	14	7/16"-20 UN	ø 1/4"
SAE #6	ø 1/4"	350	FZ-2059 *	33	17	9/16"-18 UN	ø 1/4"
SAE #8	ø 1/4"	350	FZ-2039 *	35	22	3/4"-16 UN	ø 1/4"
SAE #8	ø 3/8"	350	FZ-2070 *	35	22	3/4"-16 UN	ø 3/8"
G 1/8"	ø 1/4"	350	FZ-2053 *	39	14	G 1/8"	ø 1/4"
G 1/4"	ø 1/4"	350	FZ-2054 *	35	19	G 1/4"	ø 1/4"
G 1/4"	ø 3/8"	350	FZ-2064 *	35	19	G 1/4"	ø 3/8"
▼ Elbow to tube end							
1/8" NPTF	ø 1/4"	350	FZ-2074 *	20	11	1/8"-27 NPTF	ø 1/4"
1/4" NPTF	ø 1/4"	350	FZ-2073 *	28	14	1/4"-18 NPTF	ø 1/4"
1/4" NPTF	ø 1/4"	350	FZ-2076 **	26	14	1/4"-18 NPTF	ø 1/4"
1/4" NPTF	ø 3/8"	350	FZ-2081 *	28	14	1/4"-18 NPTF	ø 3/8"
3/8" NPTF	ø 1/4"	350	FZ-2082 *	31	19	3/8"-18 NPTF	ø 1/4"
3/8" NPTF	ø 3/8"	350	FZ-2083 *	31	14	3/8"-18 NPTF	ø 3/8"
SAE #2	ø 1/4"	350	FZ-2024 *	23	11	5/16"-24 UN	ø 1/4"
SAE #4	ø 1/4"	350	FZ-2035 *	26	14	7/16"-20 UN	ø 1/4"
SAE #4	ø 1/4"	350	FZ-2002 **	26	14	7/16"-20 UN	ø 1/4"
SAE #8	ø 3/8"	350	FZ-2071 *	37	22	3/4"-16 UN	ø 3/8"
G 1/8"	ø 1/4"	350	FZ-2051 *	26	14	G 1/8"	ø 1/4"
G 1/4"	ø 1/4"	350	FZ-2052 *	32	19	G 1/4"	ø 1/4"
ø 1/4"	ø 1/4"	350	FZ-2014 **	23	14	ø 1/4"	ø 1/4"

* Flared
** Flareless



Pressure: 0 - 350 / 700 bar

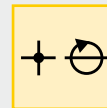
Threads: NPTF, BSPP, SAE

For tubing: ø 1/4 - 3/8", 8 mm

E Acoplamientos

F Raccords

D Verschraubungen



 **Options**

Gauges and accessories

 190 ▶

Hoses, couplers

 192 ▶

Hydraulic oil, manifolds

 193 ▶

 **Important**

Do not exceed the maximum pressure.

Use fittings and tubing in high cycle applications and areas having excessive heat or weld splatter.

To seal NPT threads use anaerobic thread sealers or Teflon paste. Apply Teflon tape one thread from the end of the fitting, to prevent it from winding up in the hydraulic system.

■ *High pressure hydraulic fittings allow connection of many components with minimum effort.*



Pressure: 0 - 350 / 700 bar

Threads: BSPP, SAE

For tubing: $\varnothing 1/4 - 3/8'' - 8 \text{ mm}$

- E** Acoplamiento
- F** Raccords
- D** Verschraubungen



Options

Gauges and accessories

190 ▶



Hoses, couplers

192 ▶



Hydraulic oil, manifolds

193 ▶

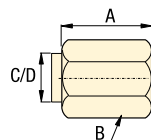
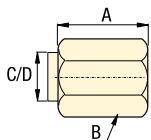
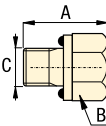
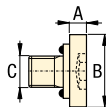
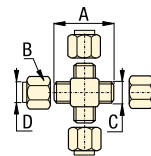
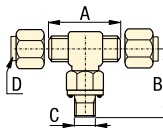
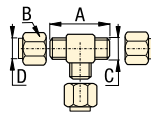
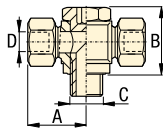
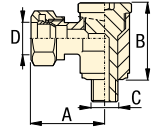


Important

Do not exceed the maximum pressure.

Use fittings and tubing in high cycle applications and areas having excessive heat or weld splatter.

Multiple hydraulic line connections are easily installed with Enerpac fittings and manifolds.



Product selection

From	To	Maximum pressure bar	Model number	Dimensions			
				A mm	B mm	C	D
▼ Swivel banjo BSPP to tube							
G 1/4"	$\varnothing 8$	700	BFZ-307	29	19	G 1/4"	$\varnothing 8$
▼ Swivel T-banjo BSPP to tube							
G 1/4"	$\varnothing 8$	700	BFZ-309	29	19	G 1/4"	$\varnothing 8$
▼ Union tee							
$\varnothing 1/4''$	$\varnothing 1/4''$	350	FZ-2015 **	45	14	7/16"-20 UN	$\varnothing 1/4''$
$\varnothing 1/4''$	$\varnothing 1/4''$	350	FZ-2021 *	45	14	7/16"-20 UN	$\varnothing 1/4''$
▼ Branch tee							
SAE #4	$\varnothing 1/4''$	350	FZ-2036 *	45	14	7/16"-20 UN	$\varnothing 1/4''$
SAE #4	$\varnothing 1/4''$	350	FZ-2004 **	45	14	7/16"-20 UN	$\varnothing 1/4''$
▼ Union cross							
$\varnothing 1/4''$	$\varnothing 1/4''$	350	FZ-2034 *	45	14	7/16"-20 UN	$\varnothing 1/4''$
$\varnothing 1/4''$	$\varnothing 1/4''$	350	FZ-2016 **	45	14	7/16"-20 UN	$\varnothing 1/4''$
▼ SAE plug							
SAE #4	-	350	FZ-2006	3	14	7/16"-20 UN	-
SAE #6	-	350	FZ-2003	3	17	9/16"-20 UN	-
▼ SAE hexagon plug							
SAE #8	-	350	FZ-2041	20	22	3/4"-16 UN	-
▼ Nut and Sleeve for tubing							
$\varnothing 1/4''$	-	350	FZ-2037 *	16	14	37°	$\varnothing 1/4''$
▼ Cap for tubing							
$\varnothing 1/4''$	-	350	FZ-2038 *	16	14	37°	$\varnothing 1/4''$
$\varnothing 1/4''$	-	350	FZ-2017 **	15	14	$\varnothing 1/4''$	$\varnothing 1/4''$
$\varnothing 3/8''$	-	350	FZ-2011 *	19	17	37°	$\varnothing 3/8''$

* Flared

** Flareless