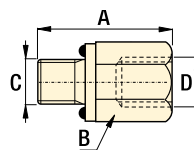



For high production applications

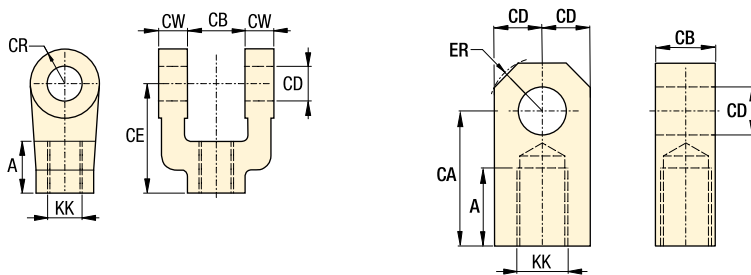
- Fit any style of Enerpac tie-rod cylinder
- Rod eyes and rod clevises
 - Required for proper mounting of TRCM series cylinders
 - Pivot pins supplied separately
- Pivot pins for rod eyes and clevises
 - Provided with cotter pins
 - Must be ordered separately
- Linear alignment coupler
 - Prevents binding caused by misalignment
 - Reduces rod seal and bearing wear

Fittings dimensions in mm []

From	To	Model number	A	B	C	D
SAE #10	3/8" NPT	FZ2077	33,2	25,4	SAE #10	3/8" NPT
SAE #12	3/8" NPT	FZ2078	25,4	31,7	SAE #12	3/8" NPT
SAE #10	SAE #6	FZ2079	32,0	25,4	SAE #10	SAE #6
SAE #12	SAE #6	FZ2080	24,4	31,7	SAE #12	SAE #6

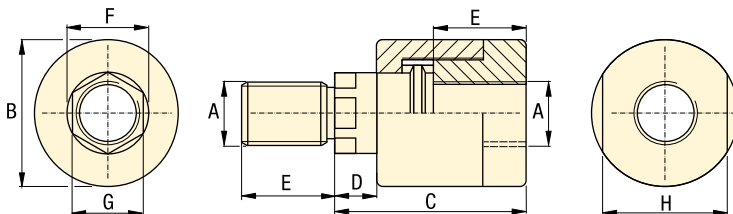


 Enerpac 350 bar Tie-Rod cylinder accessories allow you to complete your design making installation on your machine a simple project.



Rod Clevis and Rod Eye dimensions in mm []

Rod clevis model number	Rod eye model number	Maximum tension load kN	KK	A	CA	CB	CD	CE	CR	CW	ER	Clevis Pin
TRRC-15	TRRE-15	55	3/4"-16	28,7	52,3	31,7	19,0	60,4	19,0	16,0	23,8	TRPP-15
TRRC-20	TRRE-20	90,9	1"-14	41,4	71,3	38,1	25,4	79,5	25,4	19,0	28,7	TRPP-20
TRRC-25	TRRE-25	135,6	1-1/4"-12	50,8	87,3	50,8	35,0	104,9	35,0	25,4	39,6	TRPP-25
TRRC-32	TRRE-32	220	1-1/2"-12	57,1	101,6	63,5	44,4	114,3	41,4	31,7	47,7	TRPP-32
TRRC-40	TRRE-40	311,8	1-7/8"-12	76,2	127,0	63,5	50,8	139,7	50,8	31,75	50,8	TRPP-40



Linear Alignment Coupler in mm []

Model number	Maximum tension load kN	A	B	C	D	E	F	G	H
TRAC-15	37,8	3/4"-16	44,4	58,6	12,7	28,7	24,6	22,3	38,1
TRAC-20	71,1	1"-14	63,5	74,6	12,7	41,4	35,0	29,4	57,1
TRAC-25	86,7	1-1/4"-12	63,5	74,6	12,7	41,4	35,0	29,4	57,1
TRAC-32	149	1-1/2"-12	82,5	111,2	20,5	57,1	44,45	38,1	76,2
TRAC-40	266,9	1-7/8"-12	95,2	138,1	22,3	76,2	50,8	47,7	88,9